

2022

HEALTH CONNECTION ANNUAL REPORT

TALK TO US

(812) 882-7927 EXT 1224

PACE@PACECAA.ORG

WWW.PACECAA.ORG



PACE

Community Action Agency, Inc.



WHO WE ARE

Health Connection is a **sexual and reproductive health** clinic that provides access and services to improve health and advance health equity by providing high-quality, affordable services regardless of the ability to pay. All services are confidential and voluntary. We believe all individuals have the right to control their reproductive lives.

HOW WE HELP

- Sexual and reproductive health care are provided on a sliding-fee scale based on family household income and size.
- Special efforts are made to reach low-income individuals and those who are not covered by insurance.
- Services reduce unintended pregnancies and the transmission of sexually transmitted infections.

OUR MISSION

Health Connection shares Pace's mission to provide support services that improve the community and encourage self-reliance.

We Educate, Empower, and Improve.

MEET OUR TEAM

Bedford



**ALLYSON HUNSINGER, WHNP-BC
NURSE PRACTITIONER**



**ABIGAIL KEITH, RN
NURSE**



**REBECCA SKIVER, PA-C
SUPERVISOR**



**GLORIA HAZARD, LPN
NURSE**

Sullivan



**MICHELLE PITCHER,
DNP, APRN, FNP-BC, NP-C
CLINICAL SERVICES DIRECTOR**

Vincennes



**DEBBIE RAMSEY, NP-C
NURSE PRACTITIONER**



**REBECCA SMITH, LPN
NURSE**



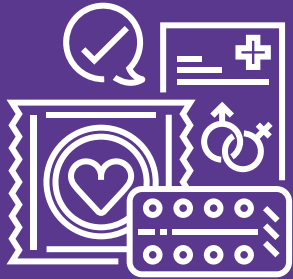
**ANGIE GRABER, WHNP-BC
NURSE PRACTITIONER**



**MARITA WAGLER
CLERICAL
ASSISTANT**

Washington

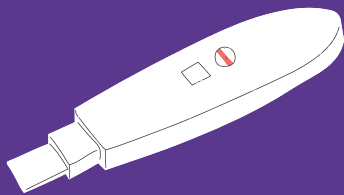
HEALTH CONNECTION IMPACT DATA



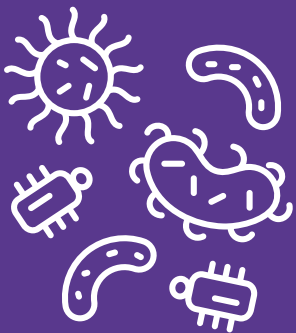
Contraception Visits: 493



HIV Tests: 717



Pregnancy Tests: 389



STI Tests: 989



Total Patient Encounters: 2,645

HIGHLIGHTS OF THE YEAR



Dr. Michelle Pitcher received the National Lyndon Baines Johnson Award

2022 Public Servant of the Year was awarded to Dr. Michelle Pitcher



PAD & TAMPON DRIVE



In 2022, Health Connection hosted a Pad & Tampon Drive, taking donations to give to the local community schools.

Health Connection was able to donate over 15,000 pads and tampons - thanks to community efforts!



THANK YOU TO OUR DONORS

**BEDFORD CHASE BANK
BEDFORD COMMUNITY CARE CENTER
BEDFORD HOOSIER HILLS CREDIT UNION
CARESOURCE
DAVISS COMMUNITY HOSPITAL
VINCENNES JAY-C SUPERSTORE
WAL-MART**

... AND ANONYMOUS DONORS

thank you

DID YOU KNOW?

52%

Of All PATIENTS
WERE 20-34 YEARS
OLD

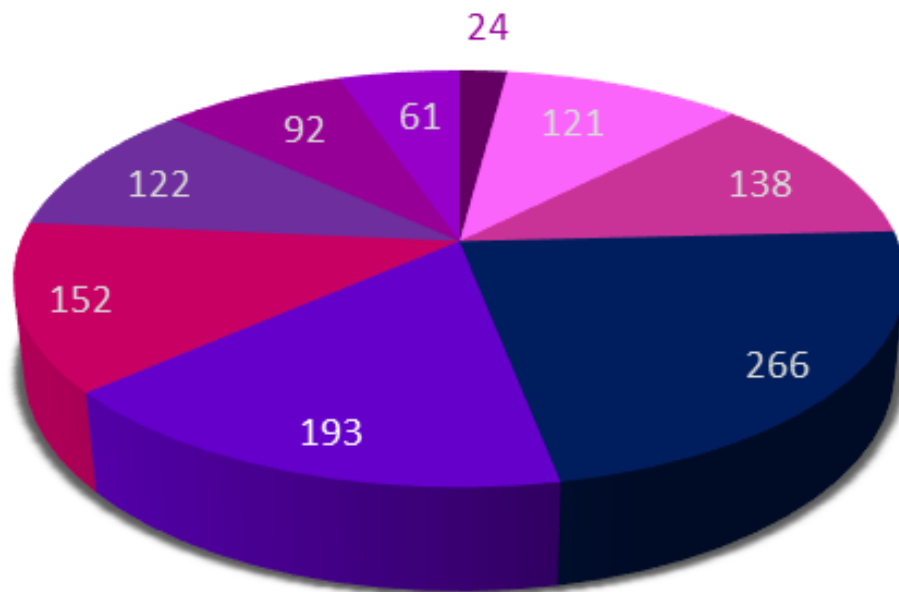
86%

Of All
PATIENTS
Identified as
FEMALE

59%

Of OUR PATIENTS SCHEDULED
ANOTHER APPOINTMENT
AFTER THEIR INITIAL ONE

Number of Patients by Age



■ 0 < 15 ■ 15-17 ■ 18-19 ■ 20-24 ■ 25-29 ■ 30-34 ■ 35-39 ■ 40-44 ■ 44+

It is the policy of Pace Community Action Agency, Inc. to comply with all State and Federal Regulations prohibiting discrimination on the basis of race, age, color, religion, sex, gender, disability, national origin, ancestry, familial status, Vietnam Era Veteran or military status in its programs, employment policies, and access to programs and facilities. Funds are provided by Indiana Family Health Council, Inc., from the U.S. DHHS, PHS Title X Family Planning Project, and IDOH/MCH Family Planning grants in addition to patient fees and donations. As public funding becomes more difficult to obtain, it is necessary for us to encourage clients to donate the maximum amount they can toward our services in order to insure the continuation of the program.

Demographic Information



AGE

**2% OF OUR PATIENTS
ARE UNDER 15 YEARS
OF AGE**

**22% ARE 15-19 YEARS
OF AGE**



RACE AND ETHNICITY

165 HISPANIC

1004 NONHISPANIC

944 WHITE

102 BLACK

25 MORE THAN ONE RACE

98 NOT REPORTED



POVERTY LEVEL

**54% ARE BELOW 100% OF THE
POVERTY GUIDELINE**

**32% ARE BETWEEN 100% AND
200%**

14% ARE OVER 200%

INSURANCE

453 MEDICAID

297 PRIVATE INSURANCE

406 UNINSURED

14 OTHER

